

SINGLE PASS HIGH CONTAINMENT & EXTRACTION BOOTH CI-1 DIV-1 EXPLOSION PROOF

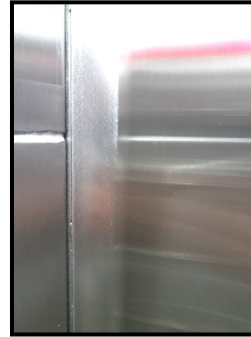


STANDARD FEATURES:

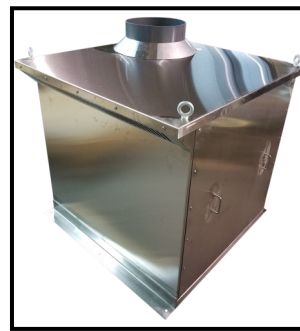
- 304 stainless steel construction with #4 finish.
- 2" sq. 14 ga 304 stainless steel structural frame with #4 finish.
- Room side replaceable supply down-flow HEPA filtration 99.99% efficient @ .3 microns. Gel seal to plenum.
- Room side replaceable high volume HEPA intakes for total exhaust or re-circulating configurations. Gel seal to plenum.
- High or Low wall extraction intake grilles.
- Pre-filtration Merv-8 eff ashrae pleated disposable.
- Polyethylene removable protective diffuser screens for even air distribution over operator.
- 304 stainless steel side walls with flush mount service access panels and penetrations.
- Recessed CI-1 Div-1 LED lighting.
- Magnehelic Differential Pressure Gauges to monitor system and filter pressure differential as required.
- Filter challenge introduction and sample ports.
- CI-1 Div-1 blowers.
- CI-1 Div-1 power and lighting on/off switches.
- CI-1 Div-1 Emergency Stop Switch.
- Variable blower speed control.
- Electrical: 230/460VAC 60HZ / 3ph.

NOTE:

- All filters are PSL challenged at factory. Unit performance meets Fed. Std. 209E and IES-RP-CC-002
- Meets all applicable OEL band exposure levels.
- USP 797 COMPLIANT.
- All electrical wiring is in conformance with NEMA and NEC standards.
- **Isolation Systems, Inc.** inspection reports available upon request.



OPTIONAL FORMED COVERED CORNERS



OPTIONAL ROOFTOP
BLOWER ENCLOSURE

OPTIONAL FEATURES:

- 316L stainless steel construction.
- Hydrophobic HEPA filtration.
- ULPA filtration 99.9995% efficient @ .12 microns.
- All corner transitions covered 1" radius. Ceiling to wall corner and floor to wall. Cove is formed into wall panels. No seams.
- AC/DC ionization.
- View panels in walls.
- Audible visual low flow alarm.
- CI-1 Div-1 Electrical outlets.
- Remote located control panels.
- Top-side mounted blower housing.
- Roof mounted blower housing with no-loss stack head.
- Ducted non-powered modules.
- Air flow monitors.
- Integral perforated work bench.
- Anti static 60 mil clear vinyl strip curtain entry.
- Swing door access.
- Secondary Articulating sliding barrier with Glove Ports.
- Drum Lifts.
- Custom sizes and configurations.

MODEL	WORK AREA	OA DIMENSIONS
HCBXP-416	4' x 4'	78"d x 50"w x 120"h
HCBXP-424	4' x 6'	106"d x 50"w x 120"h
HCBXP-432	4' x 8'	134"d x 50"w x 120"h
HCBXP-636	6' x 6'	106"d x 78"w x 120"h
HCBXP-648	6' x 8'	134"d x 78"w x 120"h
HCBXP-864	8' x 8'	134"d x 102"w x 120"h
HCBXP-880	8' x 10'	162"d x 102"w x 120"h
HCBXP-100	10' x 10'	162"d x 126"w x 120"h

**All information herein is subject to change without notice.*

**All catalog dimensions are nominal.*



© 7/2021