

## WL320A/320B

Treatment process: Ion-exchange    Purified water: Deionized water    Water quality: Type2 / A4

Space-saving water purifier ideal for washing; can be installed under a fume hood or sink, or on a table



WL320B

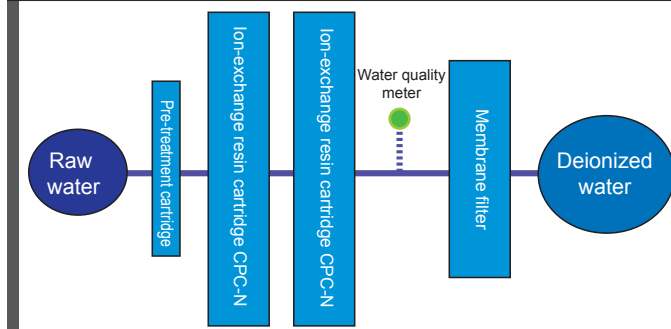
- Deionized water compliant with ASTM D1193 Type2 / JIS K 0557 A4 level, suitable for high sensitivity trace analysis
- Easy operating digital display
- Standard equipped with membrane filter at water feeding port
- Equipped with water leak detection function that stops water supply in case water leak occurs, by activating the electric leakage breaker
- Displays replacement of consumables

### Specifications

Model	WL320A	WL320B
Type	Benchtop	Built-in caster
Purified water	Deionized water ASTM D 1193 Type2 / JIS K 0557 A4	
Water purifying method	Ion-exchange	
Water feeding	One touch coupler connecting resin hose	
Deionized water delivery rate	~1L/min (continuously)	
Pre-treatment cartridge	0.1μm hollow fiber + activated carbon (PWF-1)	
Ion-exchange resin cartridge	Ion-exchange cartridge (CPC-N) 3Lx2	
Leakage detection	Water leakage detector forcefully shuts off feed water solenoid valve when water leakage detected	
Ion-exchange water delivery port	Water sampling stand	
Raw water pressure range	0.5~5x100kPa (0.5~5kgf / cm <sup>2</sup> )	
Power source	AC100~240V <0.2A	
External dimensions*	W400xD320xH600mm	
Weight	Main unit: ~30kg, water sampling stand: 5kg	
Water quality display	LED digital display (conductivity / resistivity)	
Other display	Replacement of consumables (pre-treatment cartridge, ion-exchange resin, membrane filter), alarm indication (water leakage)	
Accessories	Water supply hose, pre-treatment cartridge, ion-exchange cartridge CPC-N, membrane filter, water sampling stand, purified water sampling hose	
Legs	Rubber legs	Movable caster

\* Protrusions not included

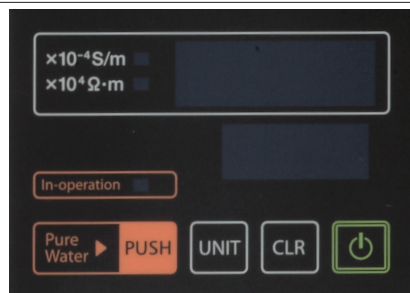
### Treatment Process



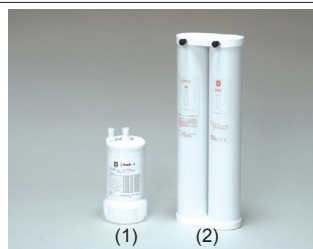
## Installation Example



## Control Panel



## Pre-treatment Cartridge Ion-exchange Resin Cartridge



(1) Pre-treatment cartridge PWF-1  
(2) Ion-exchange resin cartridge CPC-N

## Water Quality Analysis

Item	ASTM D 1193 Standard Type 1	JIS K 0057 Standard A4	Measured value	ASTM D 1193 level	JIS K 0057 level
Electrical conductivity (μS/cm)	<0.056	<1	<1	Type 2	A4
Organic carbon (μg /l)	<50	<50	46	Type 1	A4
Zinc (μg Zn/l)	-	<0.1	<0.01	-	A4
Silica (μg SiO <sub>2</sub> /l)	<3	<2.5	0.1	Type 1	A4
Chloride ion (μ Cl <sup>-</sup> /l)	<1	<1	<0.1	Type 1	A4
Sulfate ion (μg SO <sub>4</sub> <sup>2-</sup> /l)	-	<1	<0.1	-	A4
<b>Total level</b>				<b>Type 2</b>	<b>A4</b>

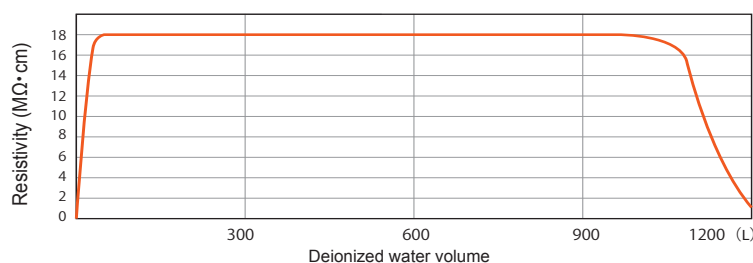
\*Quality of raw water may cause different results.

\*For water quality comparison JIS K 0057 ↔ ASTM D 1193 refer to page 115 of the general catalog.

## Structure



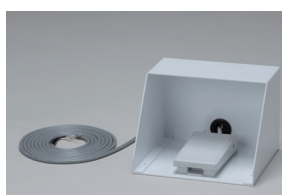
## Ion-exchange Resin Life Span Test (resistivity)



## Optional items / consumables

Product code	Description
253277	Fume hood / sink installation kit OWL60
253686	Water supply port unit OWH10
253099	Pre-treatment cartridge PWF-1
CPCN30010	Ion-exchange resin cartridge CPC-N
9020010004	Membrane filter (2 pcs. set) MFRL727
253276	Remote water sampling function (with foot switch) OWL58
253275	Remote water sampling function (without foot switch) OWL58

Note: When combined with fume hood or installed under the sink, the following are required: WL320 + 253277 + 253276 (with foot switch)



Foot switch (optional)

## Dimensions (mm)

